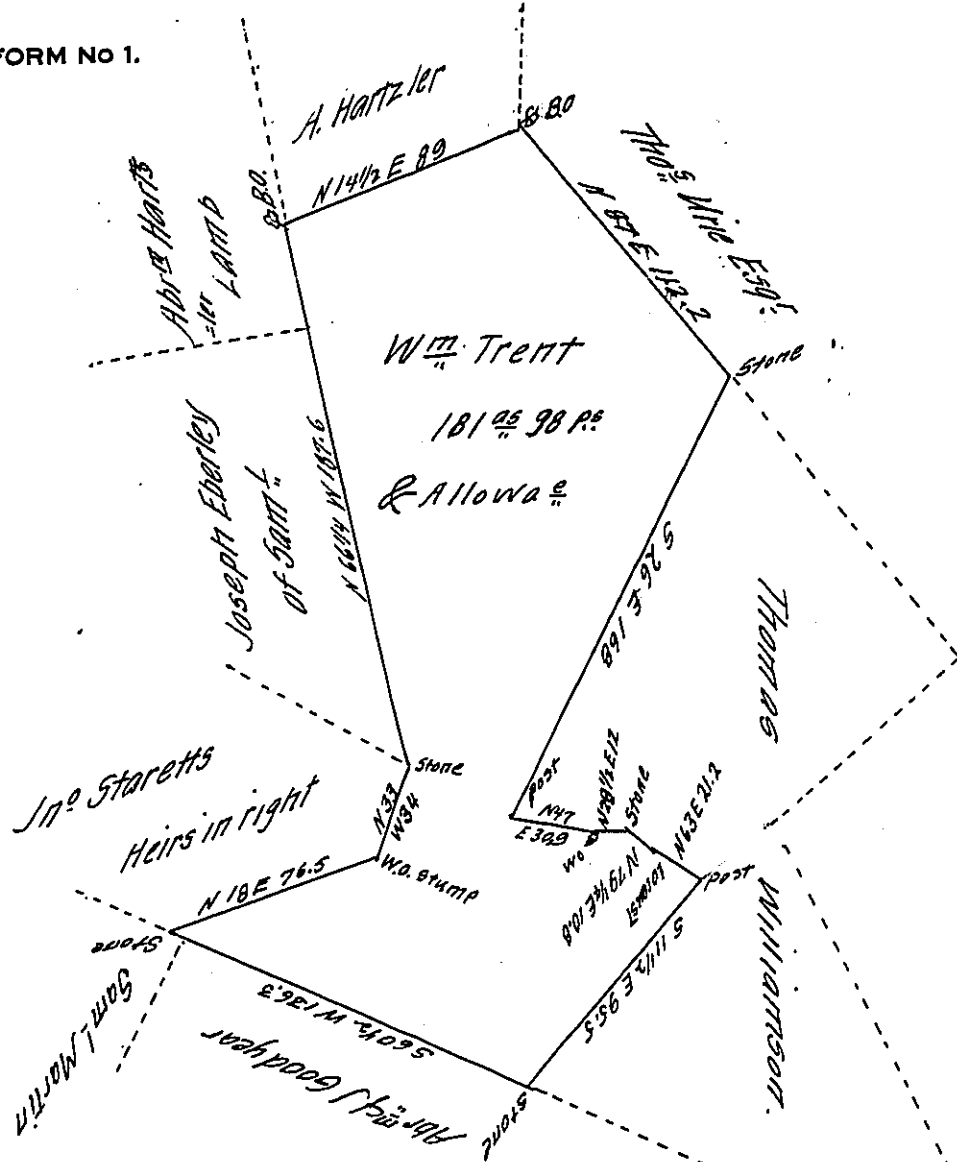


FORM NO 1.



*Draught of a tract of Land situate in Allen & Eastpennsboro townships Cumb<sup>a</sup> County Cont<sup>d</sup> 181 acres and 98 perches & Allowance of six p<sup>c</sup>t for Roads &c. it being part of 389 acs & 130 p<sup>c</sup>s of Allowance, which being surveyed in pursuance of A Warrant grant<sup>d</sup> to William Trent dat<sup>d</sup> February the 13<sup>th</sup> Anno Domini 1750. Surveyed & Divided November the 1<sup>st</sup> Anno Domini 1822.*

*To Samuel Cochran Esquire  
Surveyor General*

*Sarrill Ruby.*

*D.S.*

*IN TESTIMONY* that the above is a copy of the original remaining on file in the Department of Internal Affairs of Pennsylvania, made conformably to an Act of Assembly approved the 16th day of February, 1833, I have hereunto set my Hand and caused the Seal of said Department to be affixed at Harrisburg, this *second* day of *April* 1907

*Siack R. Brown*  
Secretary of Internal Affairs.